

NWS Raleigh Briefing



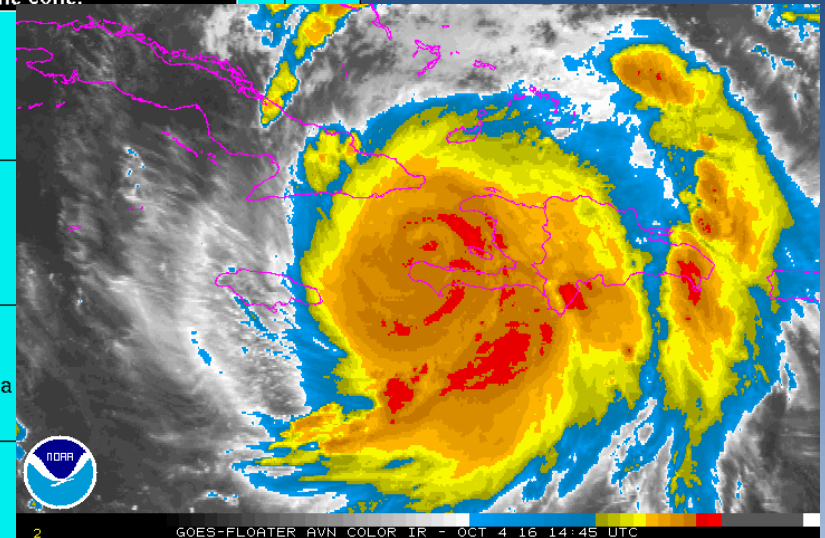
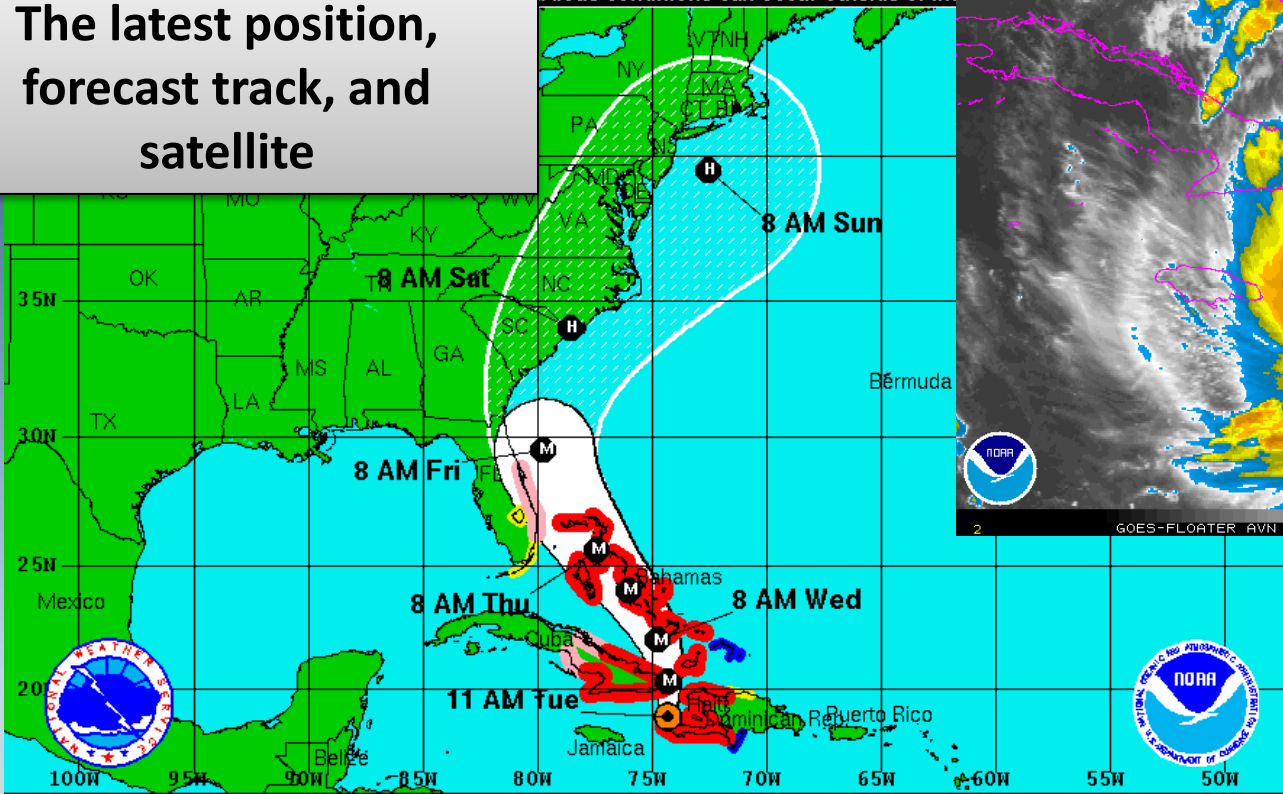
- Hurricane Matthew will begin affecting central NC as early as Friday morning, with full impacts from late Friday through Saturday.
- Primary hazards for central NC will include heavy rain and flooding, and occasional gusty winds.
- Due to last week's heavy rain and flooding, locations across the southern Coastal Plain, Sandhills, and Fayetteville areas will be particularly vulnerable to additional flooding.

Tuesday, October 4, 2016 - Noon



Note: The cone contains the probable path of the storm center but does not show hazardous conditions can occur outside of the cone.

The latest position, forecast track, and satellite

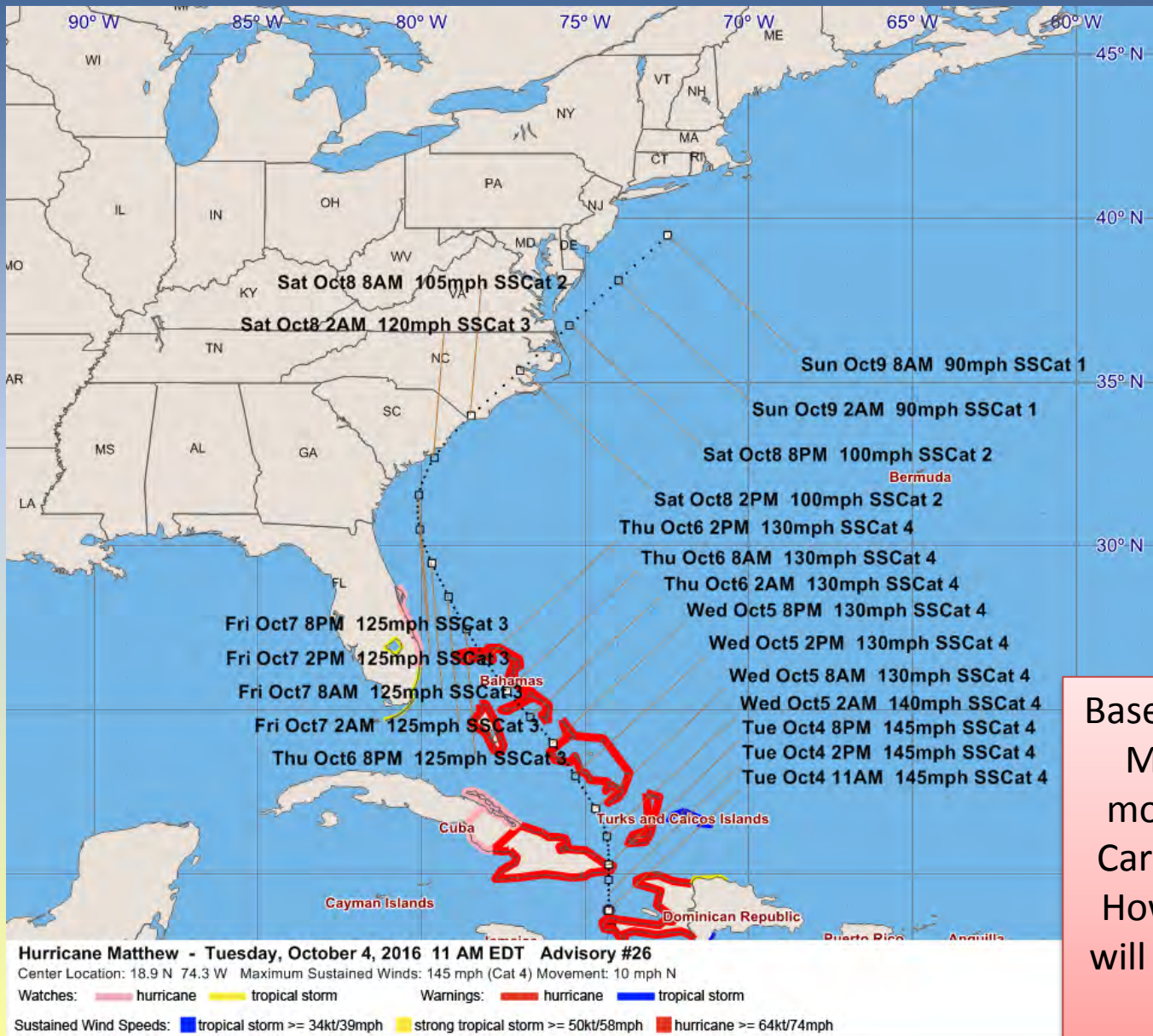


Hurricane Matthew Tuesday October 4, 2016 11 AM EDT Advisory 26 NWS National Hurricane Center	Current Information: ● Center Location 18.9 N 74.3 W Max Sustained Wind 145 mph Movement N at 10 mph	Forecast Positions: ● Tropical Cyclone ○ Post-Tropical Sustained Winds: D < 39 mph S 39-73 mph H 74-110 mph M > 110mph
Potential Track Area: ☞ Day 1-3 ☞ Day 4-5	Watches: ■ Hurricane ■ Trop.Storm	Warnings: ■ Hurricane ■ Trop.Storm

Saffir-Simpson Hurricane Wind Scale

Category	Sustained Winds	Types of Damage due to Hurricane Winds
1	74-95 mph	Very dangerous winds will produce some damage
2	96-110 mph	Extremely dangerous winds will cause extensive damage
3	111-129 mph	Devastating damage will occur
4	130-156 mph	Catastrophic damage will occur
5	157 mph or higher	Catastrophic damage will occur

Forecast Track Timing

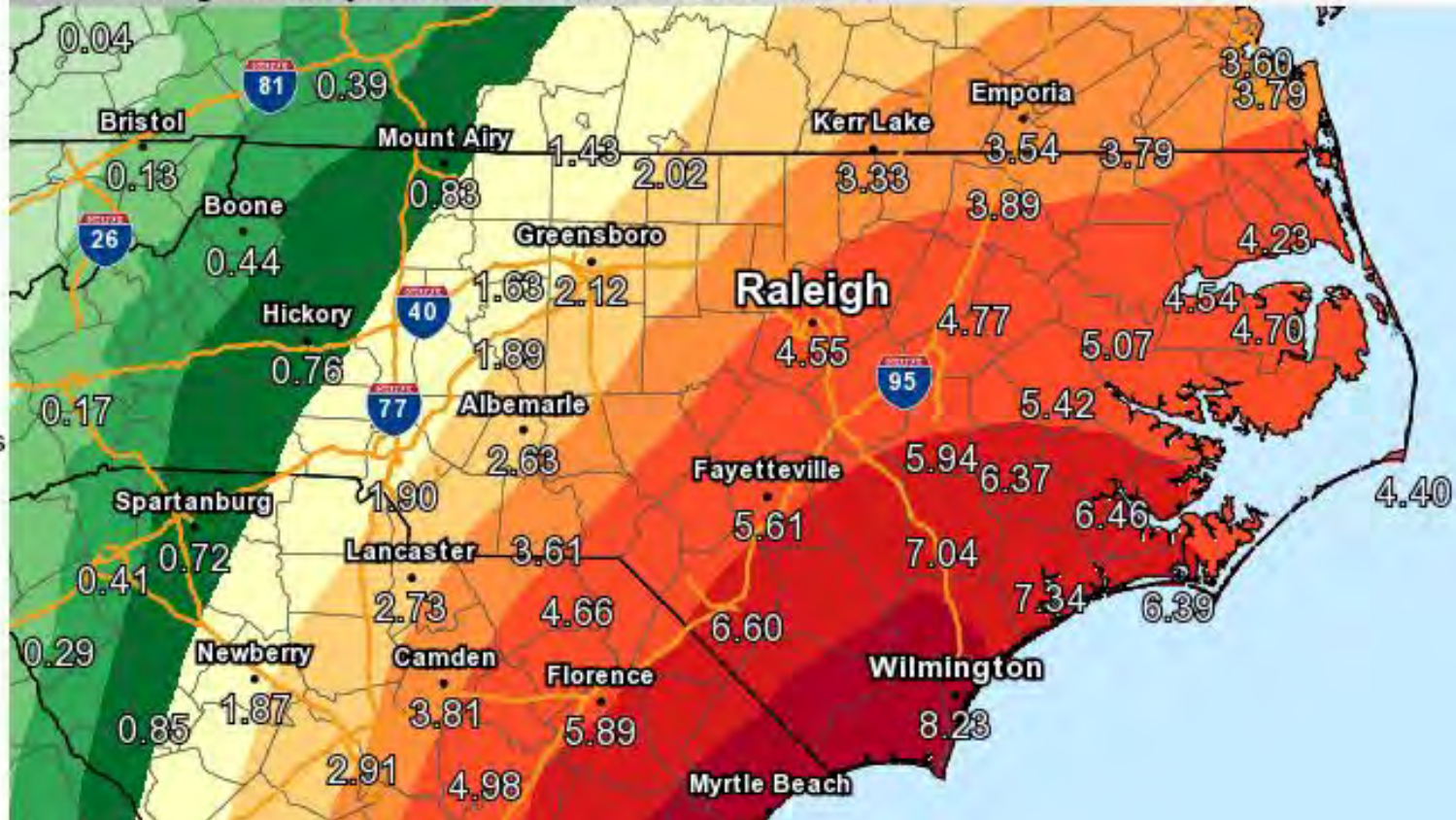


Based on the latest advisory, Matthew is expected to move northeast along the Carolina coast on Saturday. However, weather hazards will likely begin affecting NC on Friday.

Forecast Precipitation

National Weather Service

Valid Ending Tuesday October 11th, 2016 at 8 AM EDT



Graphic Created
October 4th, 2016
10:43 AM EDT

Heavy rain may lead to flooding, particularly along and east of the US-1 corridor. The heaviest rain is dependent on the track and timing of Matthew, but right now is expected sometime from Friday into Saturday. **Due to last week's heavy rain and flooding, locations across the southern Coastal Plain, Sandhills, and Fayetteville areas will be particularly vulnerable to additional flooding.**

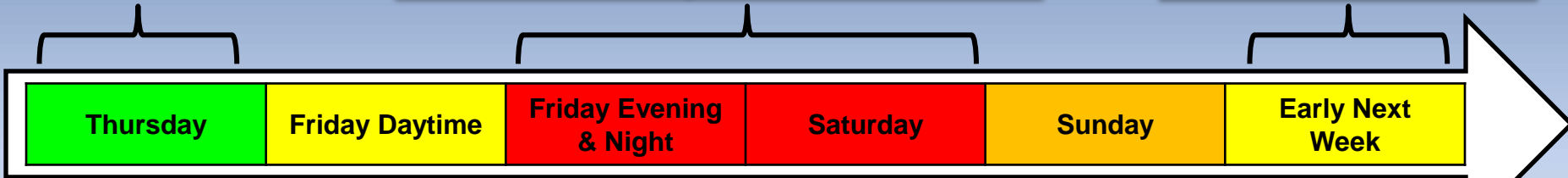


Expected Timeline of Weather and Impacts for Central North Carolina Updated at Noon on Tuesday, October 04, 2016

Increasing clouds, but still fair weather-storm preparations should be rushed to completion!

Heavy rain bands will move across central NC during this time as Matthew moves NE along the Carolina coast. Heavy rain which may lead to flooding, occasional gusty winds resulting in downed trees and power outages, are possible during this time.

Local river flooding possible and may continue, depending on how much rain falls, and where it falls.



Matthew rain bands spreading north into central NC. Occasional heavy rain and increasing wind. Heaviest rain and strongest winds south and east of the Triangle region.

Rain and wind should be over, however local river flooding may be possible, depending on how much rain falls, and where it falls.

	No hazardous weather impacts expected
	Isolated and/or modest impacts with low threat to life and property
	Localized dangerous impacts that could lead to increased threat to life and property.
	Severe impacts that could lead to significant threat to life and property.
	Extreme impacts with widespread and/or prolonged life-threatening situation.

Hazards/Impacts Severity by Area

Hurricane Matthew

Friday Oct 7 through Sunday Oct 9

