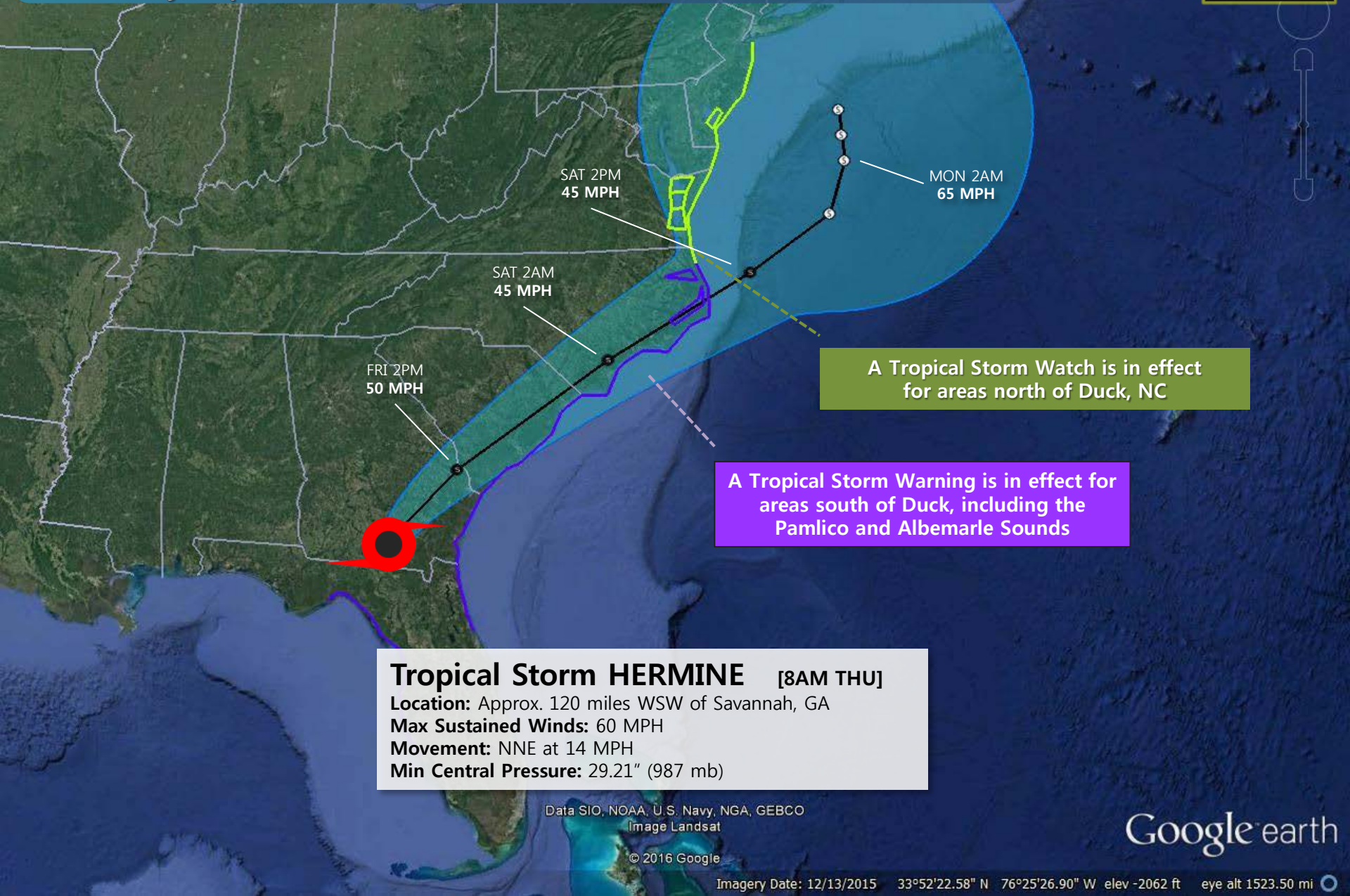


TROPICAL WEATHER OUTLOOK

Valid Friday, September 02, 2016



A Tropical Storm Watch is in effect for areas north of Duck, NC

A Tropical Storm Warning is in effect for areas south of Duck, including the Pamlico and Albemarle Sounds

Tropical Storm HERMINE [8AM THU]
Location: Approx. 120 miles WSW of Savannah, GA
Max Sustained Winds: 60 MPH
Movement: NNE at 14 MPH
Min Central Pressure: 29.21" (987 mb)

Data SIO, NOAA, U.S. Navy, NGA, GEBCO
Image Landsat
© 2016 Google

Google earth

Imagery Date: 12/13/2015 33°52'22.58" N 76°25'26.90" W elev -2062 ft eye alt 1523.50 mi

WATCHES & WARNINGS

Valid Friday, September 02, 2016



– AS OF 8:30 AM FRIDAY –

A **Tropical Storm Warning** is in effect for coastal NC south of Duck, including the Pamlico and Albemarle Sounds.

A **Tropical Storm Watch** in effect for coastal NC north of Duck.

A **Flash Flood Watch** is in effect through Saturday for central and eastern NC.

A **Tornado Watch** is in effect until 4PM FRI for Brunswick and Columbus Counties.

3-DAY PRECIPITATION FORECAST

Valid 8:00AM Friday – 8:00AM Monday



Rainfall accumulations of 2-6" across central NC. Heaviest rain along and east of the US-1 corridor.

Rainfall accumulations of 4-7" across eastern NC with locally heavier amounts possible.

QPF (inches)



Data SIO, NOAA, U.S. Navy, NGA, GEBCO
Image Landsat

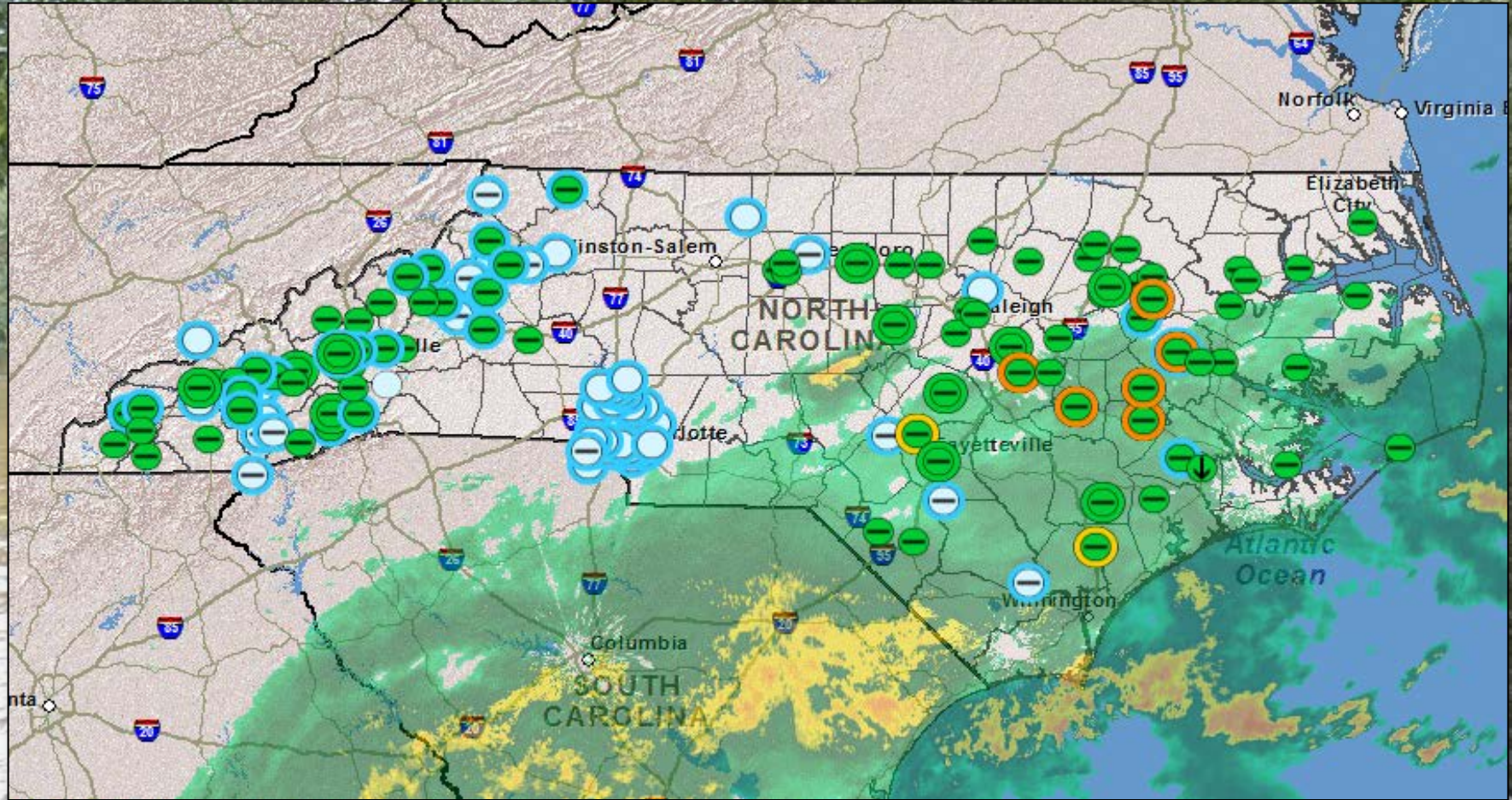
© 2016 Google

Google earth

Imagery Date: 12/13/2015 35°20'02.28" N 80°01'25.64" W elev 439 ft eye alt 483.98 mi

RIVER FLOOD OUTLOOK

Valid Friday, September 02, 2016



- Major Flooding
 - Not Risk Rated
 - Out of Service
- Trend**
- Rising
 - Falling
 - Constant

HAZARDS SUMMARY

HURRICANE HERMINE

Valid Friday, September 02, 2016



HAZARD	DETAILS	THREAT
Storm Surge	Location: Coastal NC Impacts: Coastal flooding up to 2'; sound side flooding up to 1' in low areas Timing: Friday evening – Saturday afternoon	Slight
Inland Flooding	Location: Along and East of I-95 Impacts: 4-7" with locally higher amounts possible; localized flooding Timing: Friday afternoon – Saturday afternoon	High
Damaging Winds	Location: Coastal NC Impacts: Winds 30-40 mph, gusts to 50-55 mph (up to 45 mph inland) Timing: Friday evening – Saturday afternoon	Moderate
Tornadoes	Location: Coastal NC Impacts: Isolated tornadoes with risk highest along the coast Timing: Friday – Saturday	Slight
Heavy Surf & Rip Currents	Location: Coastal NC Impacts: High threat for strong rip currents and heavy surf Timing: Friday – Sunday	High
Overwash & Beach Erosion	Location: Vulnerable low-lying areas Impacts: Ocean overwash, beach erosion and some coastal flooding Timing: Friday – Saturday night	Moderate
High Seas	Location: Coastal NC Impacts: TS force winds across waters Timing: Friday – Sunday morning	High

KEY TAKEAWAYS

Valid Friday, September 02, 2016



Tropical Storm Hermine Impacts

FRI	FRI PM	SAT - SUN	MON
Rain increases through the day. Winds begin increase in SE NC around noon. Brief tornadoes possible during later afternoon and evening.	Heavy rain increases in coverage and intensity across eastern and central NC. Localized flash flooding and brief tornadoes possible overnight.	Conditions will improve from southwest to northeast as Tropical Storm Hermine moves northeastward off Mid-Atlantic coast. Lingering flooding of poor drainage areas.	No issues associated with Tropical Storm Hermine.

1) Greatest impacts to NC expected Friday PM through Saturday AM.

2) Heavy rain (4-7") + wind (30-40 mph, gusts of 55 mph) expected Friday evening through Saturday morning across eastern NC.

3) Localized flooding and flash flooding will be primary threat.

4) Conditions will begin to improve by mid-day Saturday with lingering showers.

5) Flood threat will subside early next week.